

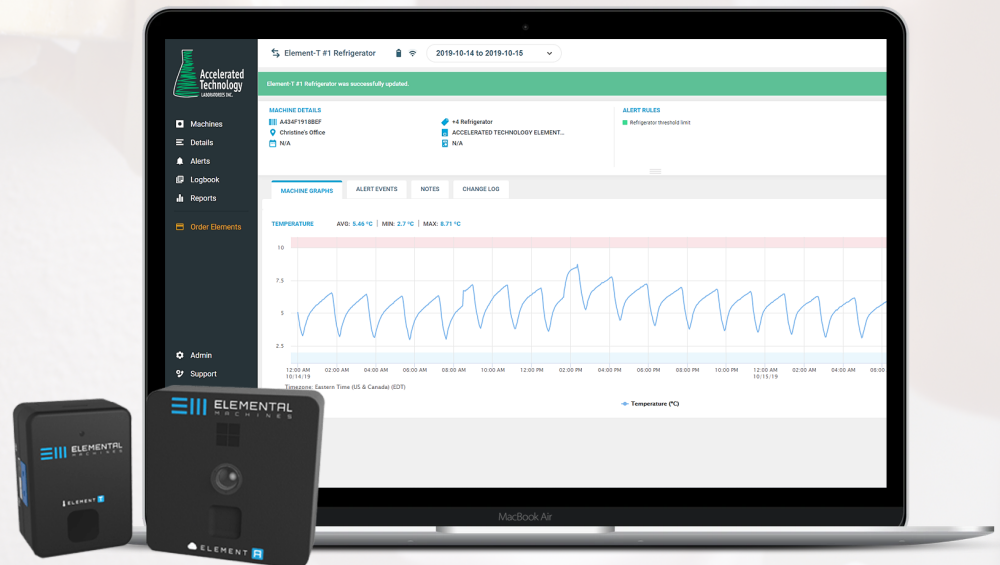
ATL Monitor Plus

Have 24/7 Confidence with ATL's Wireless Environmental Monitoring

Monitor Plus is ATL's continuous monitoring solution for your laboratory. This enhancement combines a wireless, portable, intelligent sensor with ATL's TITAN® and Sample Master® LIMS providing laboratories with a total paperless automation solution. Monitor Plus has the capability to collect temperature, light, humidity, and pressure and transmit these readings to your personal web portal. This product is ideal for measuring the environment within analytical testing laboratories, food & beverage, cannabis, and manufacturing facilities, and anywhere the environment can impact processes or instruments. This best-in-class technology combination will allow users to affordably meet regulatory compliance goals, enhance data quality, and maximize resources.

Typical Applications

- Laboratories
- Refrigerators
- Freezers
- Incubators
- Ovens
- Cryo Tanks
- Bio-fuels
- Greenhouses



Performance Highlights

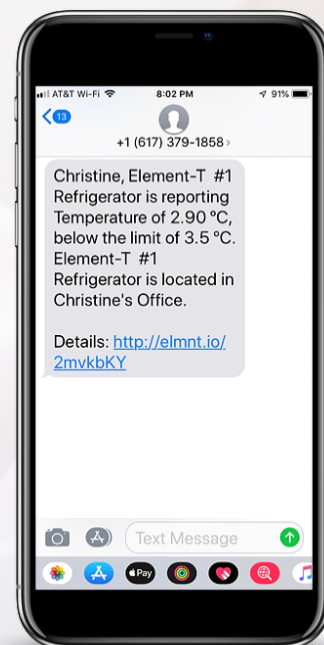
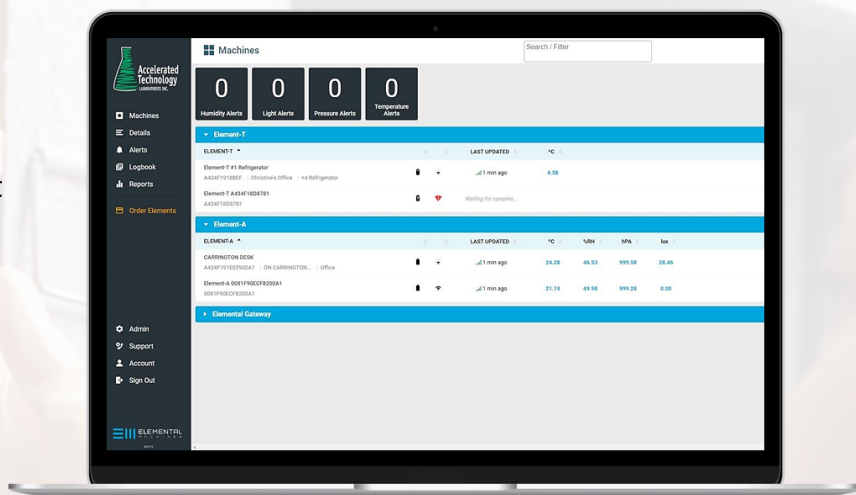
- Battery operated; No wires
- Easily expandable platform
- Data is typically uploaded via WiFi, and has cellular backup in case of power outage or network interruption
- Installs in less than one minute
- Battery level appears on dashboard and will alert you when it needs to be changed
- Data is sampled every 15 seconds

Installation of Monitor Plus Sensor

The Monitor Plus sensor is typically mounted magnetically to something metallic in the environment it is monitoring. It contains a very strong magnet that holds it firmly in place. If it is attaching to a non-ferrous surface, you can use double-sided Velcro to hold it in place. There are no mounting holes or screws required.

Dashboard

- All data is stored in the Cloud and accessible from anywhere you have an internet connection.
- Alerts are fully customizable - The robust rules engine allows you to customize alerts via SMS and/or email when your equipment or environment deviates from the norm, even during power outages. You can also automate your alerting workflow via escalating messaging so that the right people are notified at the right time.
- Set up alerts and add notations to data sets for regulatory compliance - When alerts are triggered due to non-conformance, your Quality Team can directly comment and annotate their corrective actions within the system for audit-friendly reporting.
- Audit reports - Automates electronic data capture to improve data integrity and record keeping for audit reports and regulatory compliance. Instrument and/or process data can be captured in accordance to 21 CFR Part 11 requirements to automatically generate audit-friendly reports, freeing up hours of time for your staff.
- Affordable insurance to protect your valuable assets.
- Calibration – NIST calibrated sensors are available and adjustable through a dashboard correction to ensure your sensors are always in compliance.
- Utilization - Door open events on cold storage and incubators offer valuable insight into asset utilization. Such data can assist operations directors in making key maintenance decisions.
- Fully customizable groups and access.
- 21 CFR part 11 compatible for electronic records.



Enhance Your LIMS & Regulatory Compliance with ATL's Environmental Monitoring Solution

Call us today at 1-800-565-LIMS